

WITSML Overview

Query By Depth

This document is the fourth of four-part topics that explains the **WITSML** function within **DataNet2**. The topics covered are :-

- **Setting up your WITSML server endpoint**
- **Importing WITSML Records to DataNet2**
- **Exporting WITSML Records from DataNet2**
- **Query by Depth**

To learn more about WITSML, visit <http://www.witsml.org>

Availability

This feature is available only on selected pages that support the **Query By Depth** capabilities. In most cases, **Query By Depth** appears only in **GeoNet** module.

1. Before performing this query, there are additional parameters that are available for setup. These are the “**Depth (from)**” and/or “**Depth (to)**” fields.
2. If you are unsure of the kind of information to fill in, you may use the **Suggestion of Depth** available beside the input field of “**Depth (from)**” and “**Depth (to)**”. (Refer Figure 1.0)

Please note that the suggested **Minimum Depth** and **Maximum Depth** values are extracted from the **Well** and **Wellbore** that you have selected.

IDS recommend you only enter data for “**Depth (from)**” or “**Depth (to)**” according to your needs.

3. To perform a query on all records that are starting from Depth 100. To do so, enter a “**100**” into the “**Depth (from)**” field.

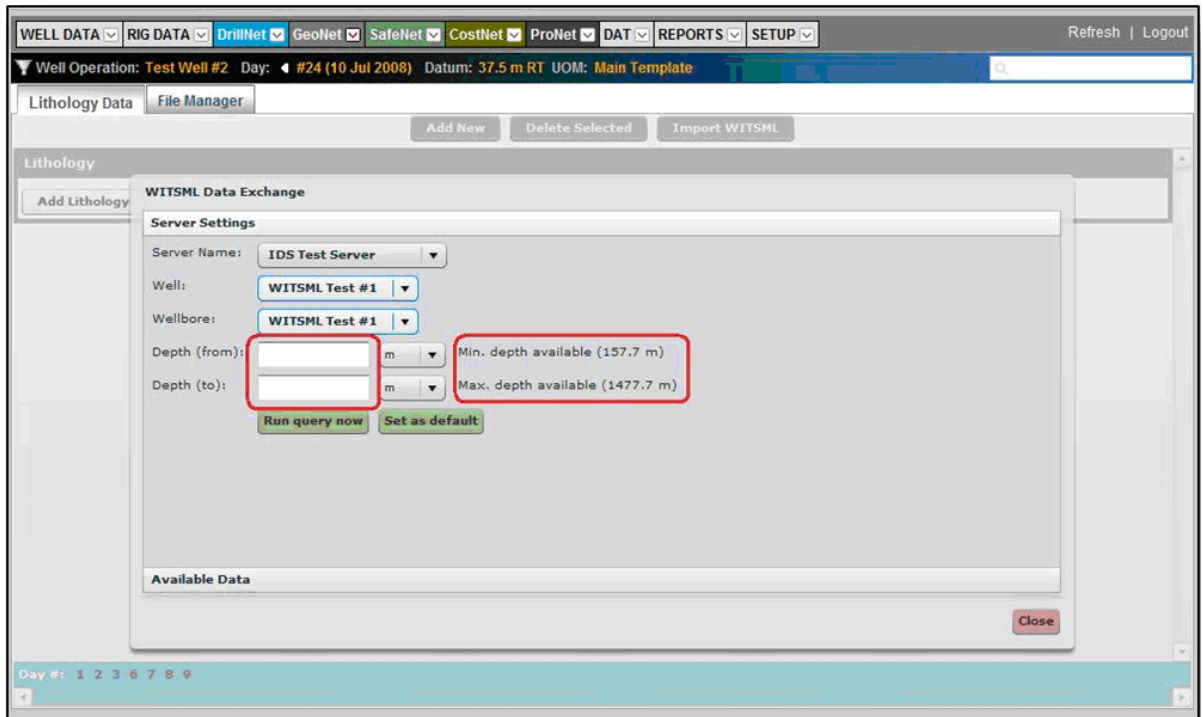


Figure 1.0 Query By Depth Setting
(Available only on selected screens and modules)