

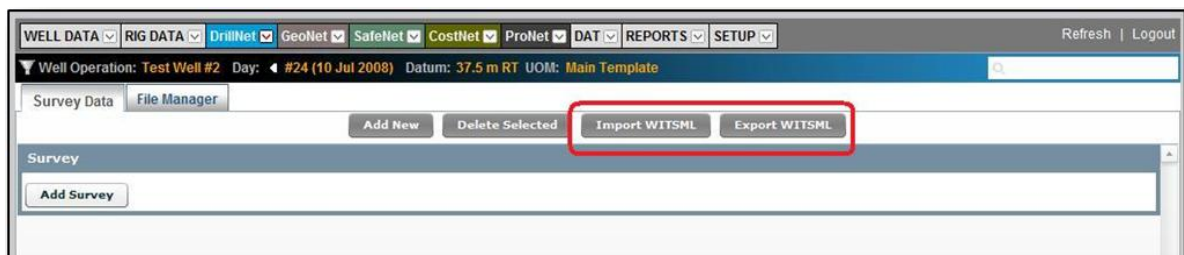
# Exporting WITSML Records from DataNet2

This document is the third of four-part topics that explains the **WITSML** function within **DataNet2**. The topics covered are :-

- **Setting up your WITSML server endpoint**
- **Importing WITSML Records to DataNet2**
- **Exporting WITSML Records from DataNet2**
- **Query by Depth**

To learn more about WITSML, visit <http://www.witsml.org>

1. Whenever you browse **WITSML-supported** pages in **DataNet2**, the pages will display the **Import WITSML** or **Export WITSML** buttons, as shown in *Figure 1.0*.
2. The step to **Export WITSML** records using **DataNet2** is similar to the importing process.



*Figure 1.0 Page with WITSML feature enabled.*

3. Click the **Export WITSML** button. This will display the **WITSML Data Exchange** pop-up screen (Refer *Figure 1.1*).
4. Select your preferred **WITSML Server**, **Well** and **Wellbore**. If no selection is made, the buttons are disabled by default.

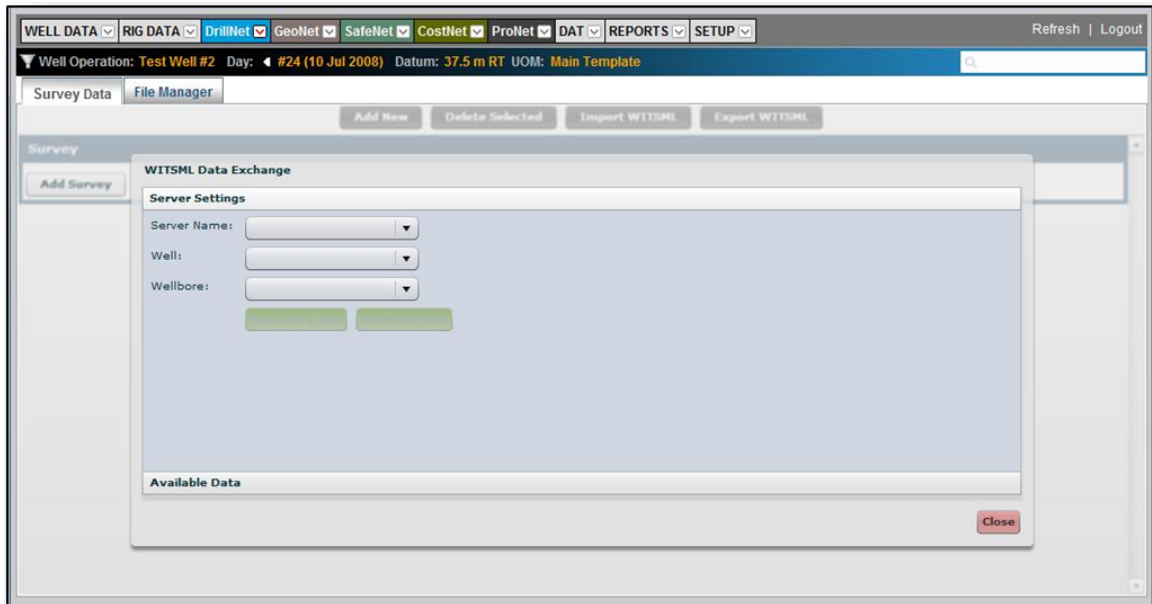


Figure 1.1 WITSML Data Exchange pop-up window

- Once a **WITSML Server** data is selected, click the **Run Query Now** button to perform data query.

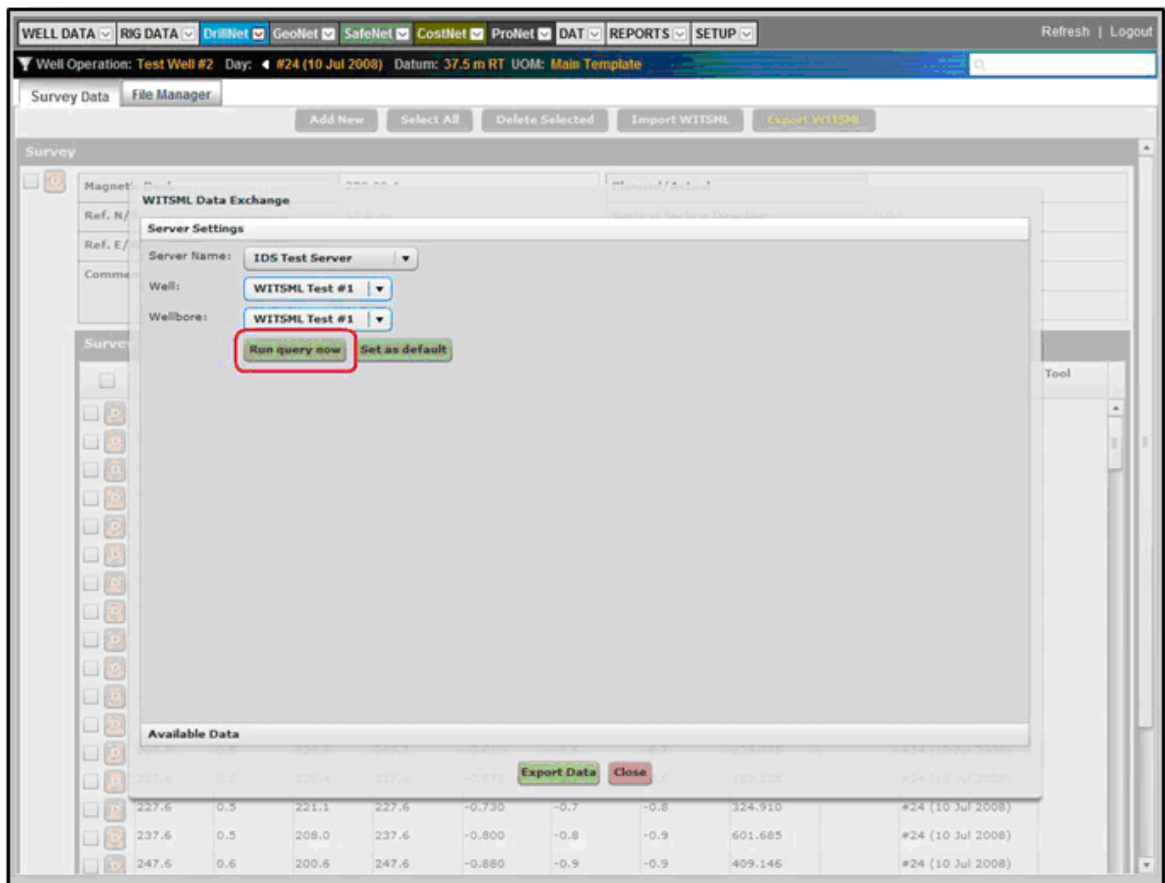


Figure 1.2 WITSML Data Exchange pop-up window

- The **WITSML** query result from the server will be populated to the **WITSML Data Exchange** pop-up screen. (Refer Figure 1.3).

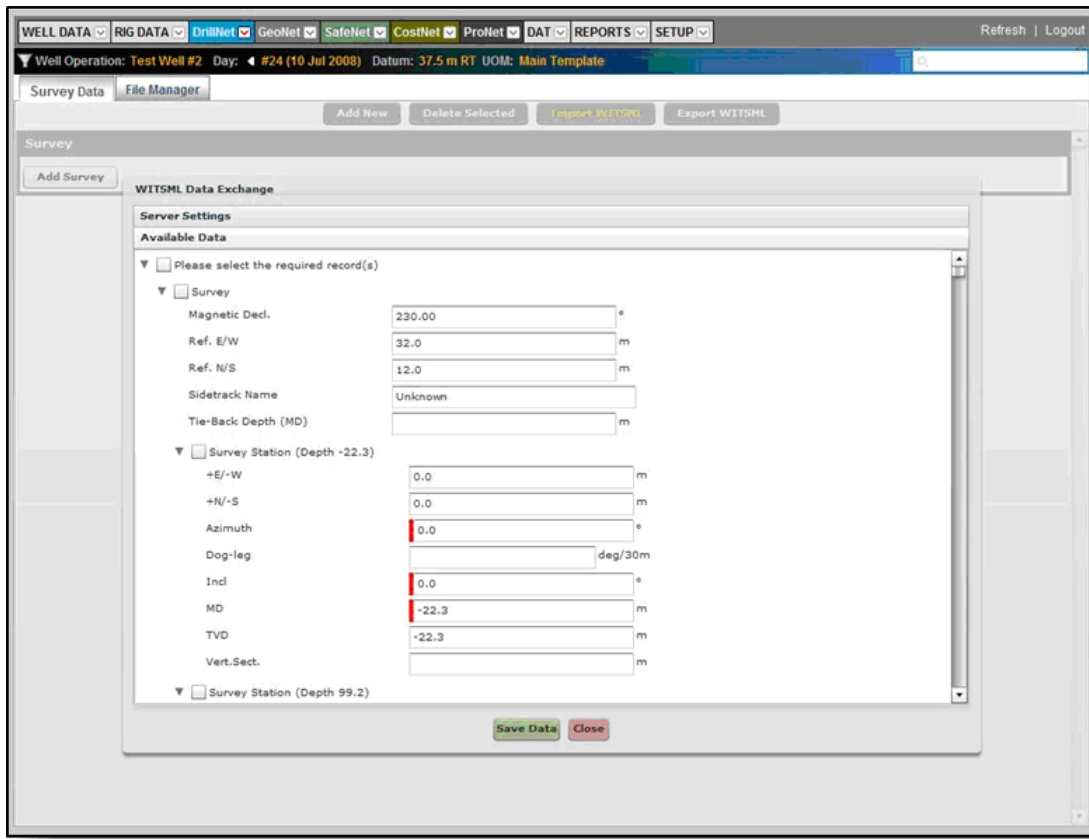


Figure 1.3 WITSML Data Exchange pop-up window populated with query result

- Select at least one (1) record or all records to **Export** before concluding the import. To select all records, tick the topmost box next to the label that says; **Please select the required record(s)**. (Refer Figure 1.4)
- Records for export are non-editable.
- To export the selected records from **DataNet2**, click the **Export Data** button.

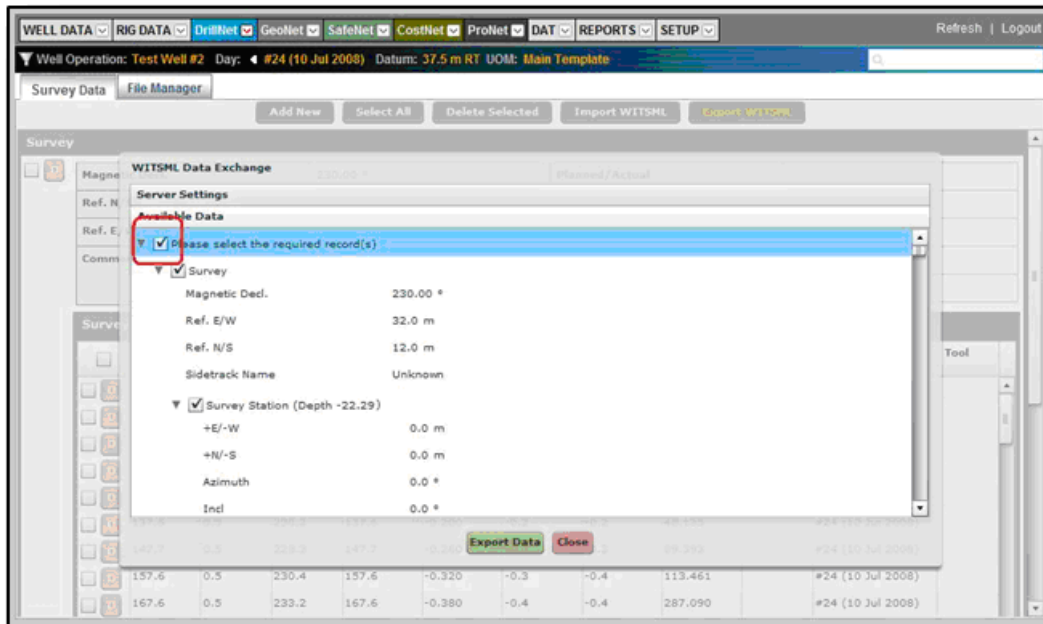


Figure 1.4 Select all records and save data.

10. If the export is successful, you will receive an export successful system message. (Refer Figure 1.5).

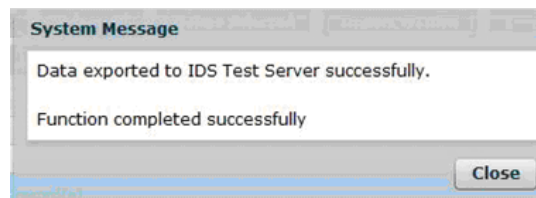


Figure 1.5 Export completed successfully pop-up window