

Importing WITSML Records to DataNet2

This document is the second of four-part topics that explains the **WITSML** function within **DataNet2**. The topics covered are :-

- **Setting up your WITSML server endpoint**
- **Importing WITSML Records to DataNet2**
- **Exporting WITSML Records from DataNet2**
- **Query by Depth**

To learn more about WITSML, visit <http://www.witsml.org>

1. Whenever you browse **WITSML-supported** pages in **DataNet2**, the pages will display the **Import WITSML** or **Export WITSML** buttons, as shown in *Figure 1.0*.

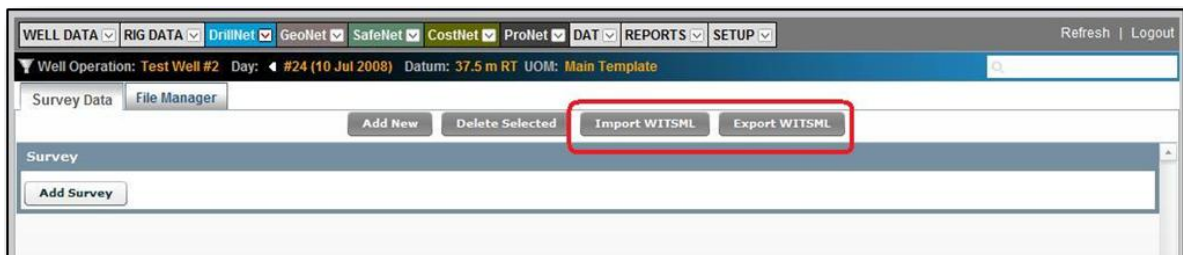


Figure 1.0 Page with WITSML feature enabled.

2. Clicking the **Import WITSML** button will display a **WITSML Data Exchange** pop-up screen (Refer *Figure 1.1*).
3. Select your preferred **WITSML Server**, **Well** and **Wellbore**. If no selection is made, the buttons are disabled by default.

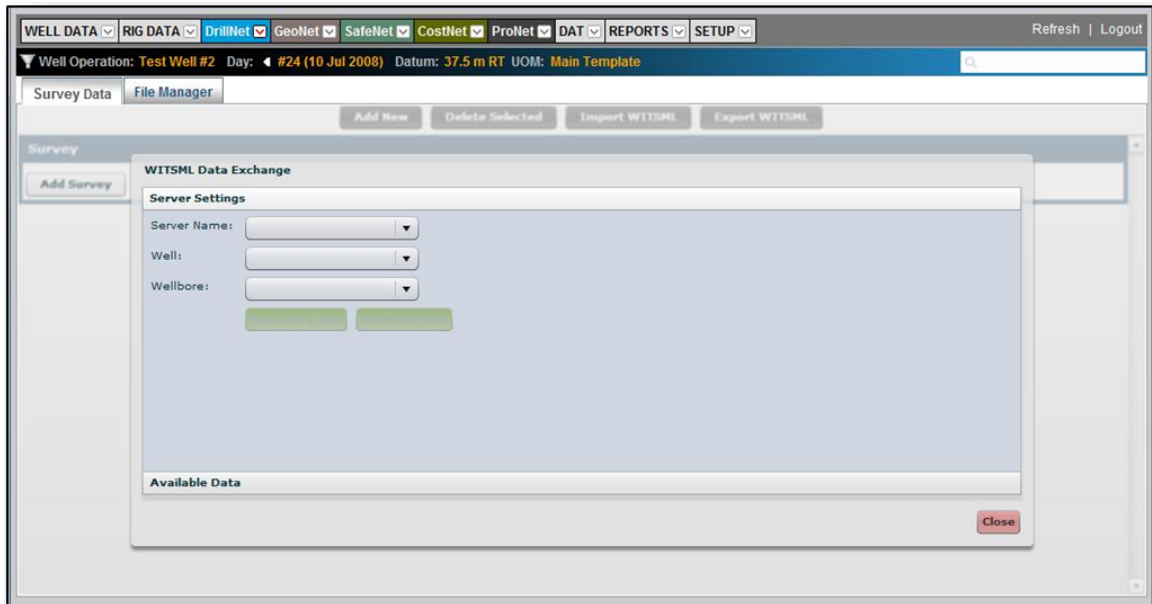


Figure 1.1 WITSML Data Exchange pop-up window

4. Once a **WITSML Server** data is selected, click the **Run Query Now** button to perform data query.

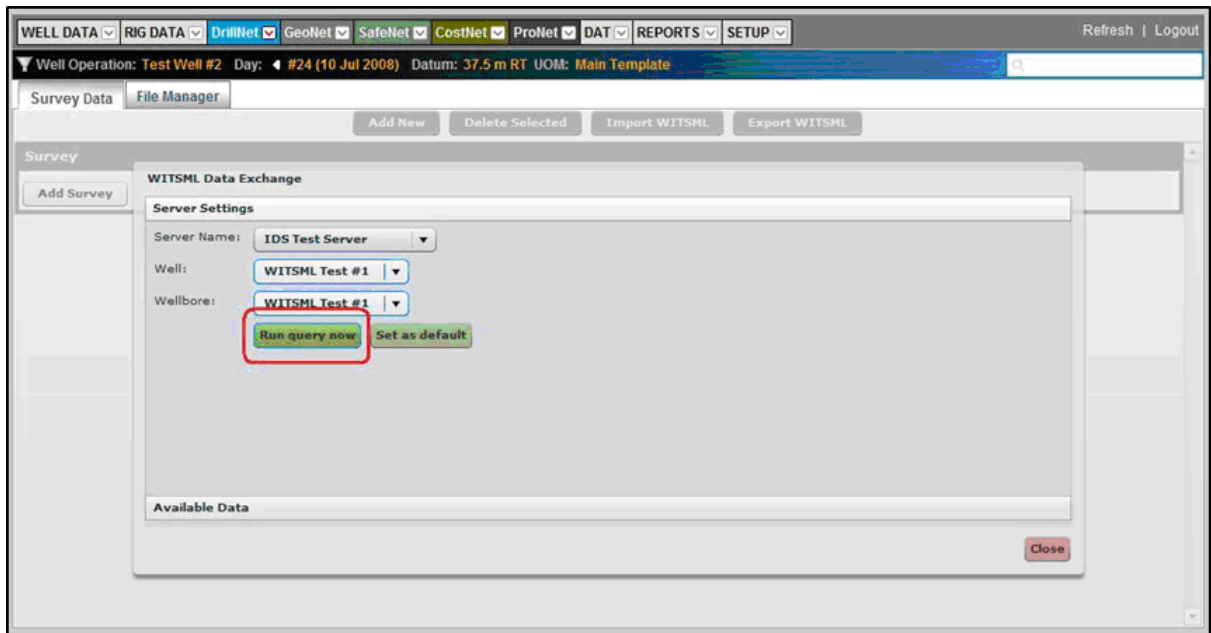


Figure 1.2 WITSML Data Exchange pop-up window

5. The **WITSML** query result from the server will be populated to the **WITSML Data Exchange** pop-up screen. (Refer Figure 1.3).

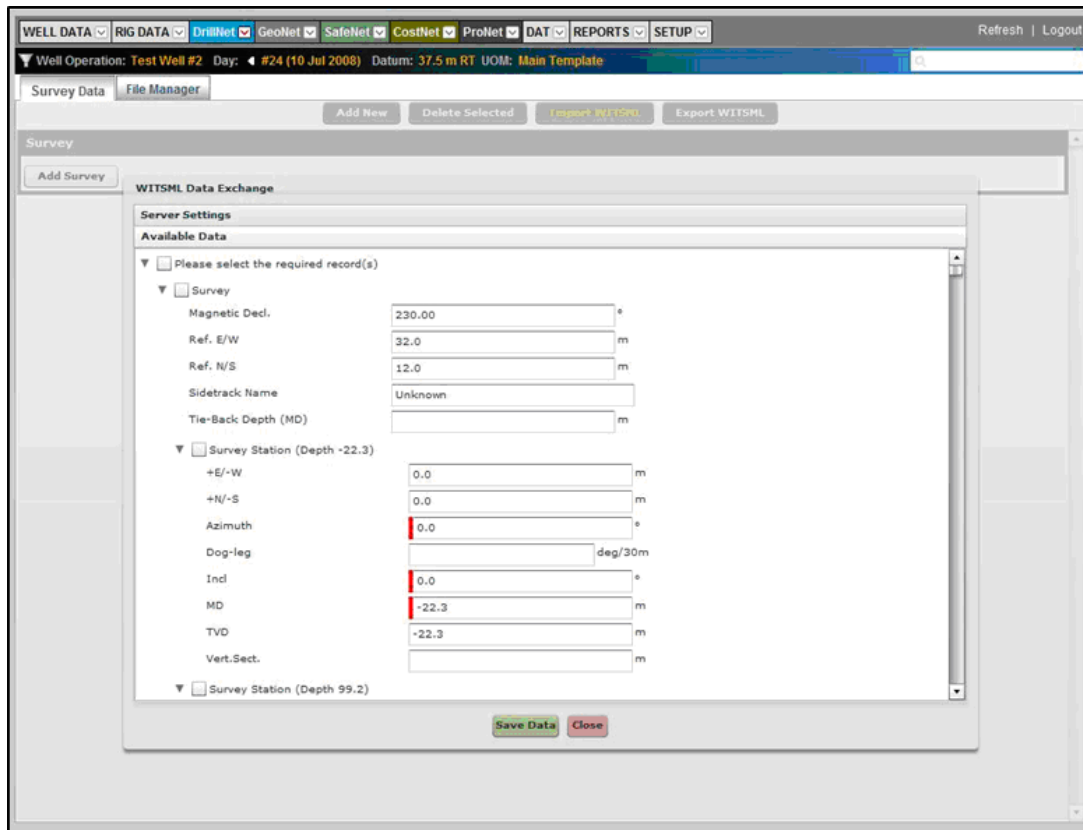


Figure 1.3 WITSML Data Exchange pop-up window populated with query result

6. Select at least one (1) record or all records to **Import** before concluding the import. To select all records, tick the topmost box next to the label that says; **Please select the required record(s)**. (Refer Figure 1.4)
7. You may edit the on-screen records before saving.
8. To save the selected records to **DataNet2**, click the **Save Data** button.

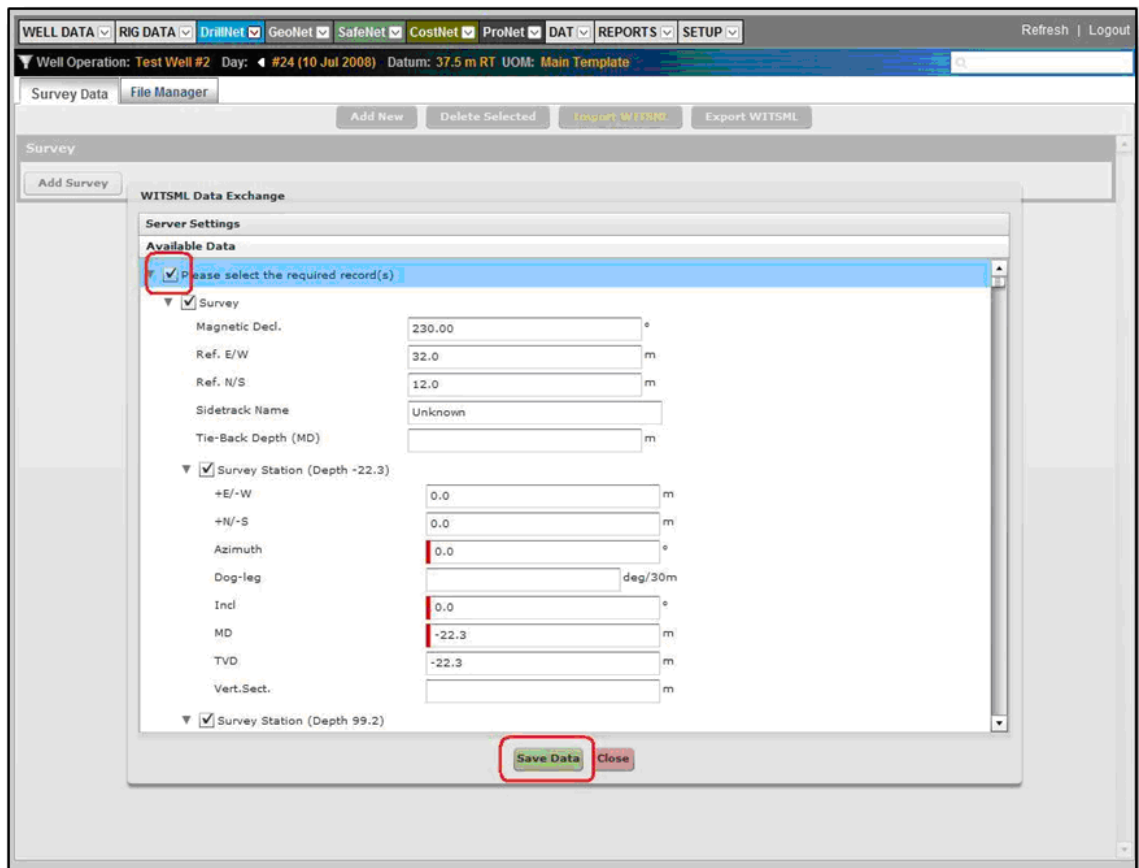


Figure 1.4 Select all records and save data.

9. If the import is successful, the records are saved in **DataNet2** database and will show up on-screen. (Refer Figure 1.5).

WITSML Data Exchange

Server Settings

Available Data

Please select the required record(s)

Survey

Magnetic Decl. 230.00 °

Ref. E/W 32.0 m

Ref. N/S 12.0 m

Sidetrack Name Unknown

Tie-Back Depth (MD) m

Survey Station (Depth -22.3)

+E/-W 0.0 m

+N/-S 0.0 m

Azimuth 0.0 °

Dog-leg m deg/30m

Incl 0.0 °

MD -22.3 m

TVD -22.3 m

Vert.Sect. m

Survey Station (Depth 99.2)

Save Data Close

Survey

Magnetic Decl. 230.00 °

Ref. N/S 12.0 m

Ref. E/W 32.0 m

Comments

Planned/Actual

Vertical Section Direction 0.0 °

Build-Drop-Walk Per 30.00

Calculate after tie-back depth?

Tie-Back Depth (MD)

Survey Station Calculate (Minimum Curvature Method) Import

	MD (m RT)	Incl (°)	Azimuth (°)	TVD (m RT)	Vert.Sect. (m)	+N/-S (m)	+E/-W (m)	Dog-leg (deg/30m)	Closure	Day #	Tool
<input checked="" type="checkbox"/>	-22.3	0.0	0.0	-22.3	0.000	0.0	0.0	0.000		#24 (10 Jul 2008)	
<input checked="" type="checkbox"/>	99.2	0.0	0.0	99.2	0.000	0.0	0.0	0.000		#24 (10 Jul 2008)	
<input checked="" type="checkbox"/>	107.6	0.5	230.7	107.6	-0.020	0.0	0.0	3.006.704		#24 (10 Jul 2008)	
<input checked="" type="checkbox"/>	117.6	0.5	227.3	117.6	-0.080	-0.1	-0.1	161.595		#24 (10 Jul 2008)	
<input checked="" type="checkbox"/>	127.6	0.5	229.2	127.6	-0.140	-0.1	-0.2	225.202		#24 (10 Jul 2008)	
<input checked="" type="checkbox"/>	137.6	0.5	230.2	137.6	-0.200	-0.2	-0.2	48.135		#24 (10 Jul 2008)	
<input checked="" type="checkbox"/>	147.7	0.5	228.3	147.7	-0.260	-0.3	-0.3	89.393		#24 (10 Jul 2008)	
<input checked="" type="checkbox"/>	157.6	0.5	230.4	157.6	-0.320	-0.3	-0.4	113.461		#24 (10 Jul 2008)	
<input checked="" type="checkbox"/>	167.6	0.5	233.2	167.6	-0.380	-0.4	-0.4	287.090		#24 (10 Jul 2008)	
<input checked="" type="checkbox"/>	177.6	0.5	224.9	177.6	-0.430	-0.4	-0.5	379.921		#24 (10 Jul 2008)	
<input checked="" type="checkbox"/>	187.6	0.5	229.3	187.6	-0.490	-0.5	-0.6	225.202		#24 (10 Jul 2008)	
<input checked="" type="checkbox"/>	197.6	0.5	224.5	197.6	-0.550	-0.6	-0.6	299.123		#24 (10 Jul 2008)	

Figure 1.5 Screens showing imported data from WITSML Server