

Setting Up WITSML Server

This document is the first of four-part topics that explains the **WITSML** function within **DataNet2**. The topics covered are :-

- **Setting up your WITSML server endpoint**
- **Importing WITSML Records to DataNet2**
- **Exporting WITSML Records from DataNet2**
- **Query by Depth**

To learn more about WITSML, visit <http://www.witsml.org>

First, you will need to setup your **WITSML** server endpoint before performing an **Import/Export** function to and from a **WITSML Server**.

Note: If the **WITSML Server Lookup** menu is not available under the **Setup** tab, please send an **“Enable WITSML Server Lookup”** email request to our Technical Support at support@idsdatanet.com.

1. To configure the **WITSML Server Lookup** according to your preference, click the **Setup** tab on the **Menu Bar** and select **WITSML Server Lookup** from the menu.

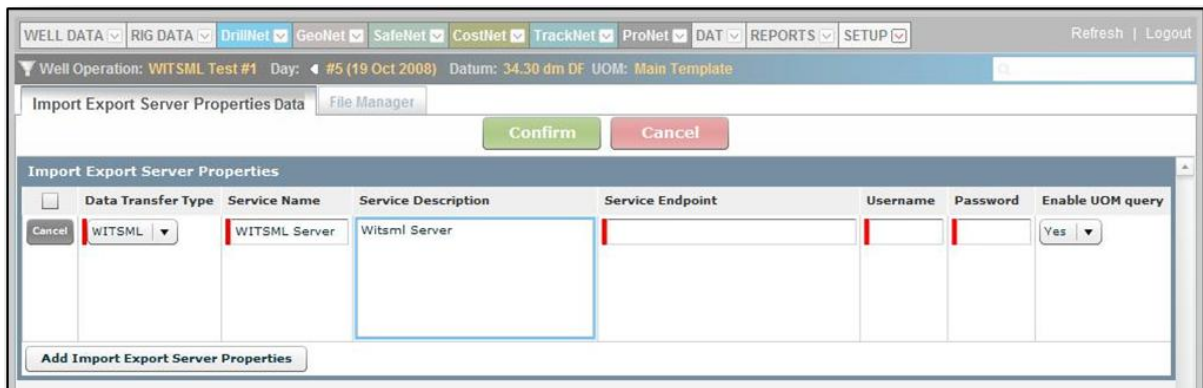


Figure 1.0 Import Export Server Properties page

2. Once the **Import Export Server Properties** page is displayed on the screen, fill up all the necessary information.

3. You may also add more than one (1) server configuration into the list. To do so, click the **Add Import Export Server Properties** button.
4. To save the record(s) into the database, click the **Confirm** button.