

## Quick Overview

# About DataNet2 Workflow

This section is a short overview about the **DataNet2** system workflow to jumpstart your learning experience. **DataNet2** has been designed to be simple and efficient, with minimal training required. The system has a standardized layout that allows users to quickly learn the basic system functionality and processes.

The **DataNet2** system consists of three integrated areas:-

### 1. Setup

As with any other systems, you must first set up **DataNet2's** metrics according to your business practice. If you skip this workflow, **DataNet2** will use the system default metrics.



Figure 1.1 Accessing the Setup menu

### 2. Data Entry Screens

You will see **Data Entry Screens** during the creation of a new record or updating an entry. **Data Entry Screens** are easily identified due to the **Confirm** and **Cancel** buttons appearing at the top of the page.

All entries can be saved to the database by clicking the **Confirm** button, or click the **Cancel** button to exit the **Data Entry Screen**.

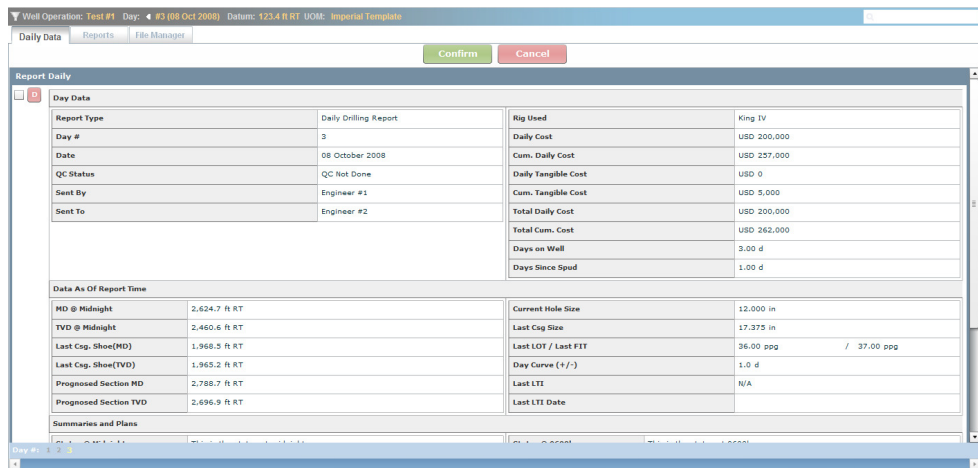


Figure 1.2 Sample of a Data Entry Screen

### 3. **Reports**

All data records can be generated and printed as reports. To learn about generating reports, please take a look at *Quick Overview > Generating Reports*.



Figure 1.3 Accessing the Reports menu