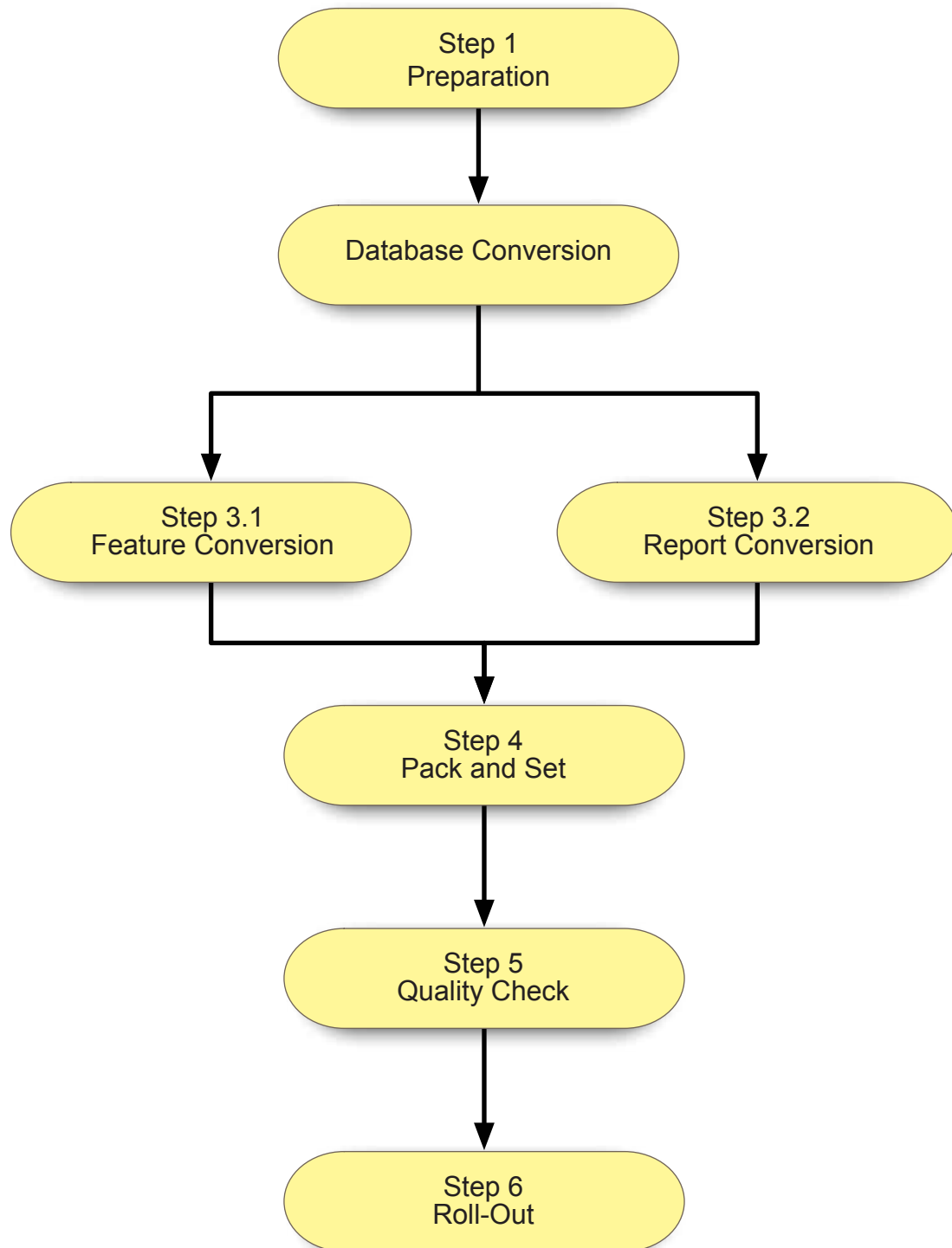
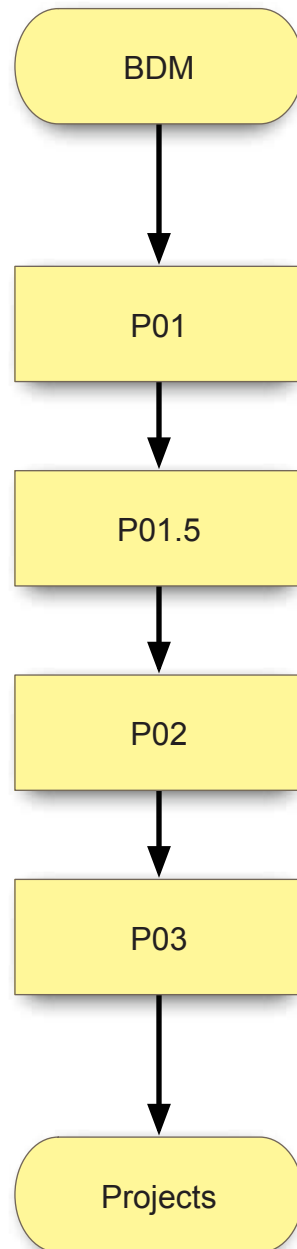


# Conversion Process Diagram

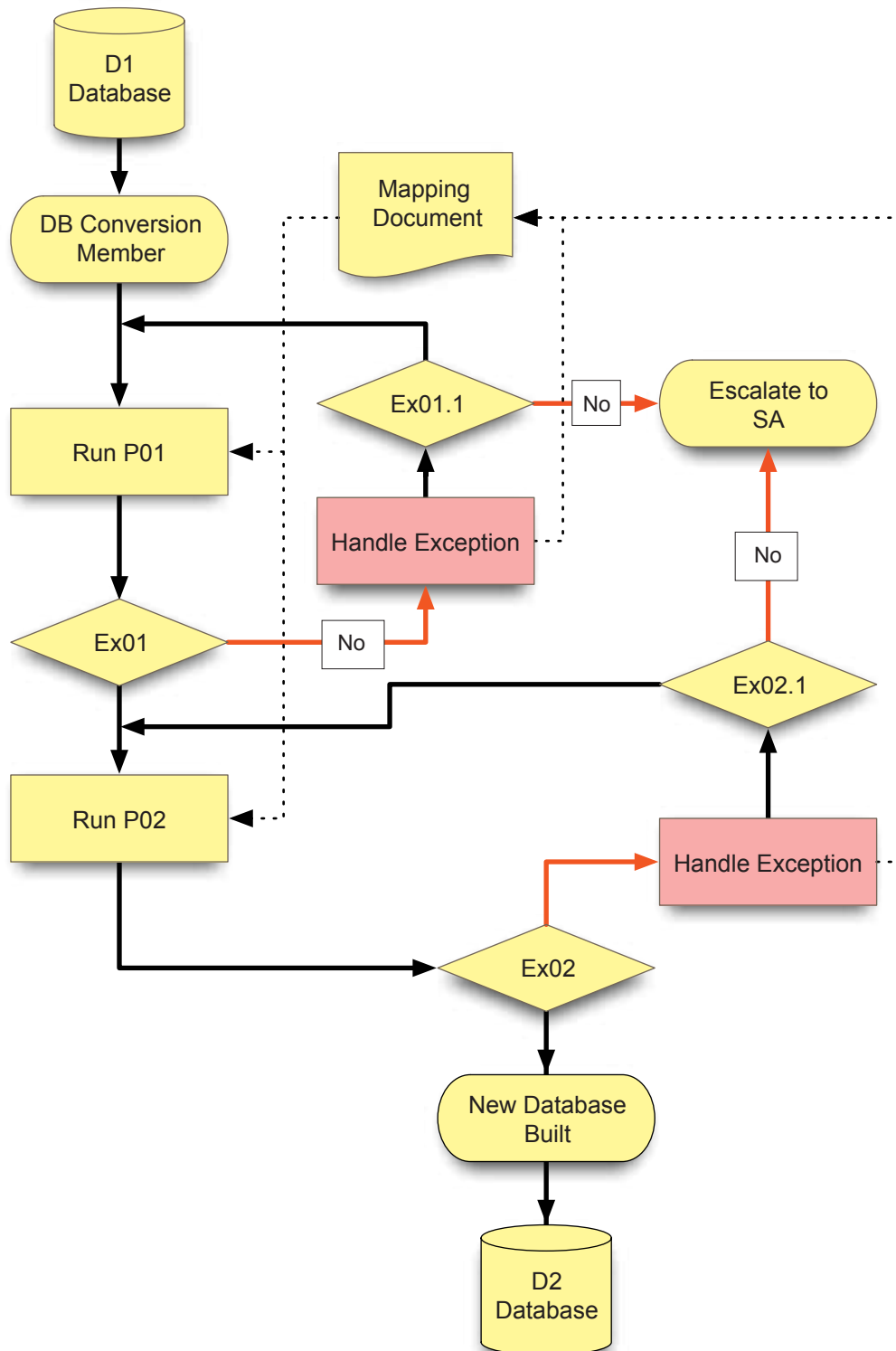


# Step 1 : Preparation



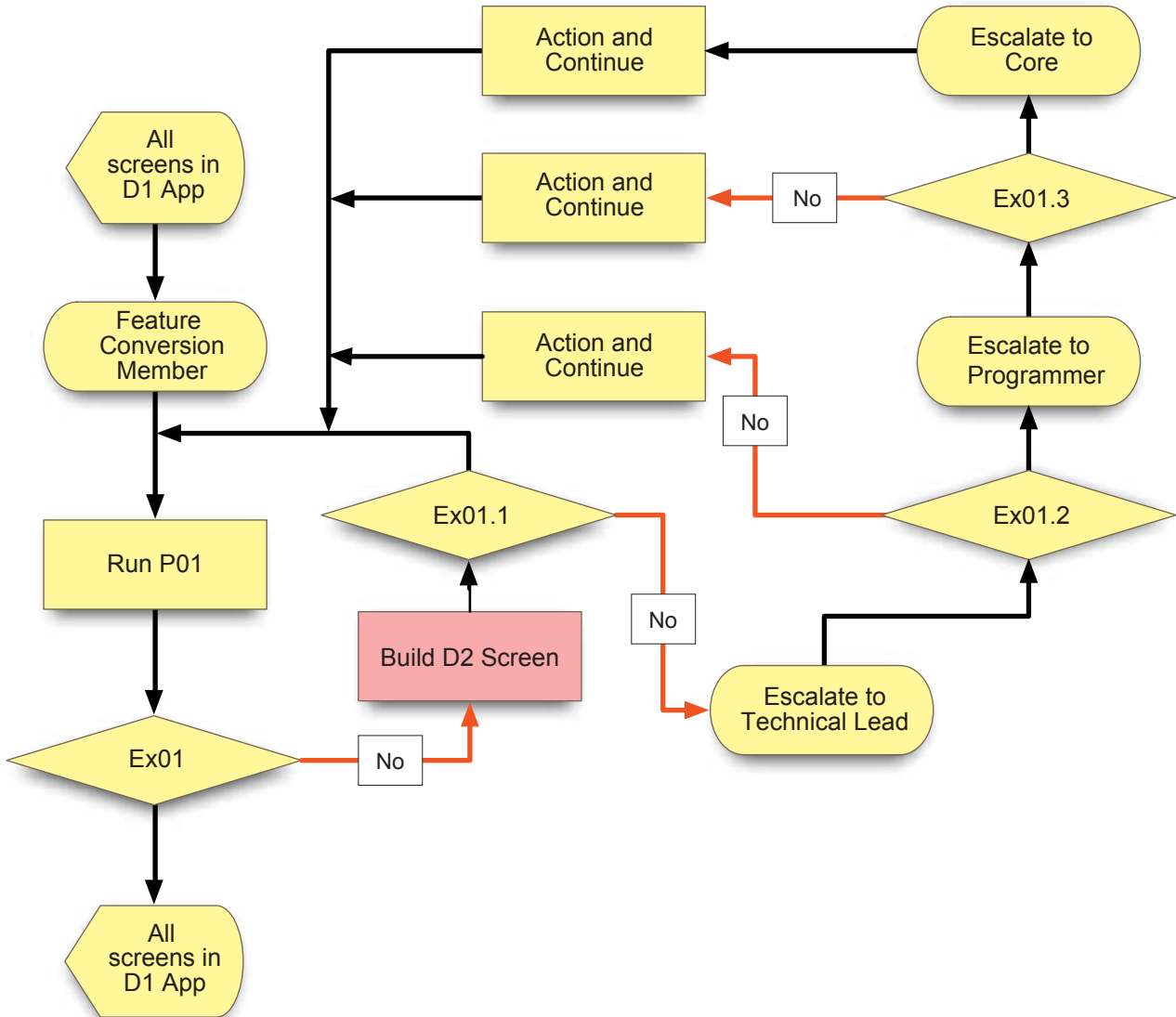
P01	- BDM checks with client on best possible time-line for conversion
P01.5	- BDM gets full rig schedule from client
P02	- BDM checks with project team on availability of resources
P03	- BDM informs client - no further changes to D1 site
Projects	- Project team takes over

## Step 2 : Database Conversion



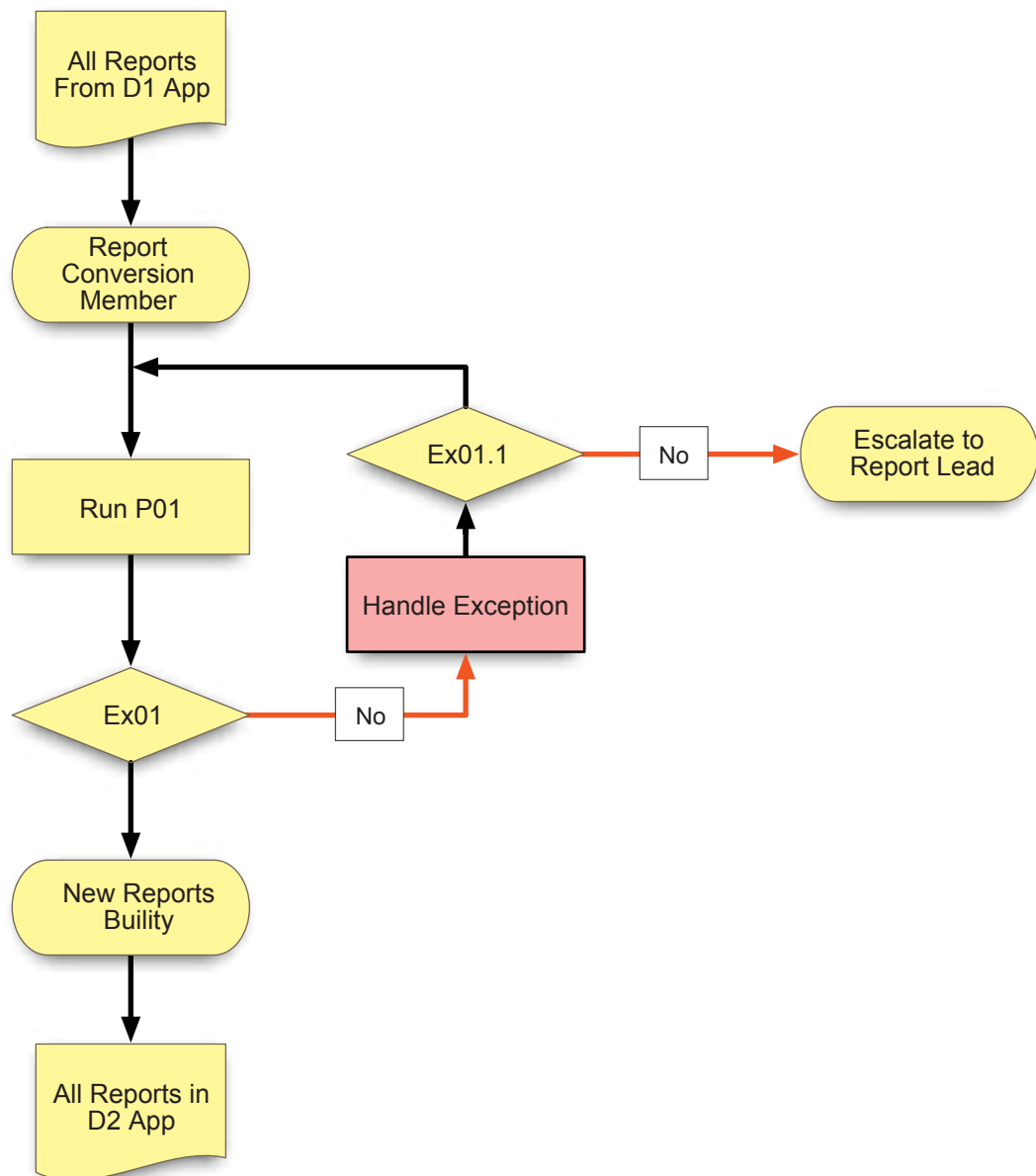
- |        |                                      |
|--------|--------------------------------------|
| P01    | - Process Check Mapping              |
| Ex01   | - Exception on mapping?              |
| Ex01.1 | - Exception handled satisfactory?    |
| P.02   | - Process Check Units                |
| Ex02   | - Unit mapping exception?            |
| Ex02   | - Unit mapping exception?            |
| Ex02.1 | - Unit mapping handled satisfactory? |

## Step 3.1 : Feature Conversion



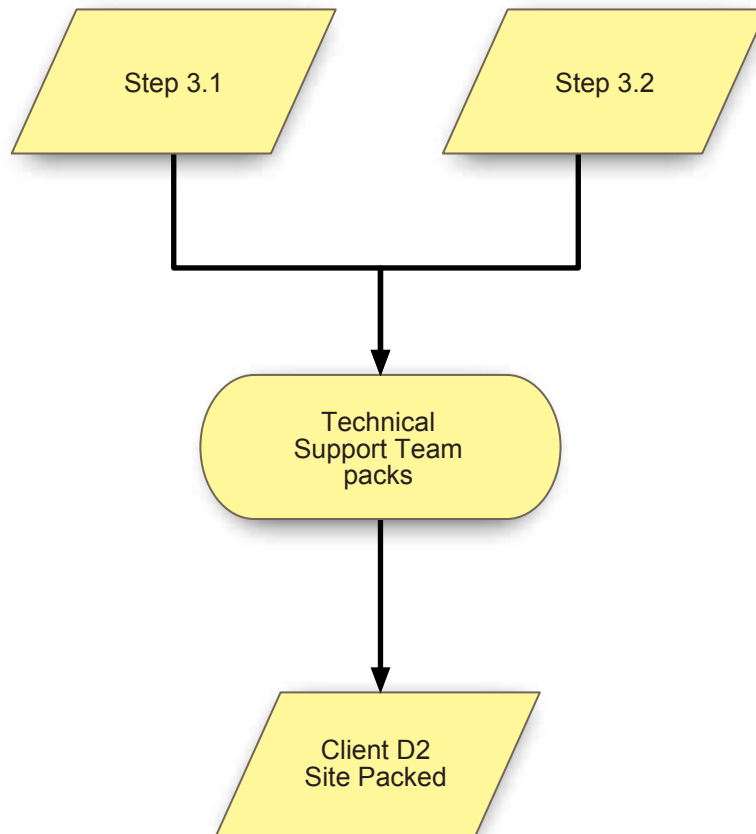
P01	- Screen logic and feature Check
Ex01	- All screens present and matches?
Ex01.1	- D2 screen build successful?
Ex01.2	- Need programmer assistance?
Ex01.3	- Need core developer assistance?
Ex02.1	- Unit mapping handled satisfactory?

## Step 3.2 : Report Conversion

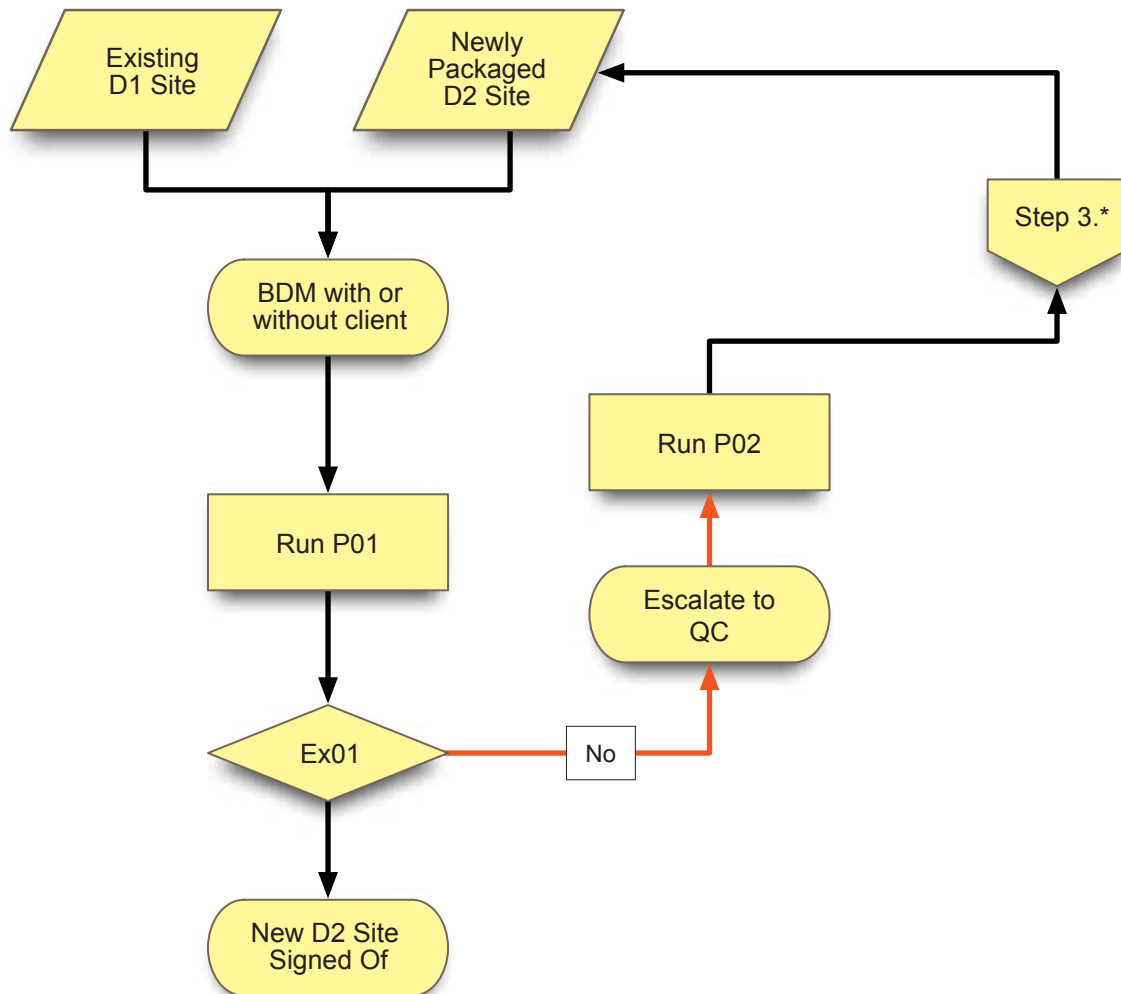


- |        |                                   |
|--------|-----------------------------------|
| P01    | - Rebuild report in BIRT          |
| Ex01   | - Exception on mapping?           |
| Ex01.1 | - Exception handled satisfactory? |

## Step 4 : Pack and Set



## Step 4 : Quality Check



P01

- Check to make sure all screens and reports are ok (units, drop downs etc)

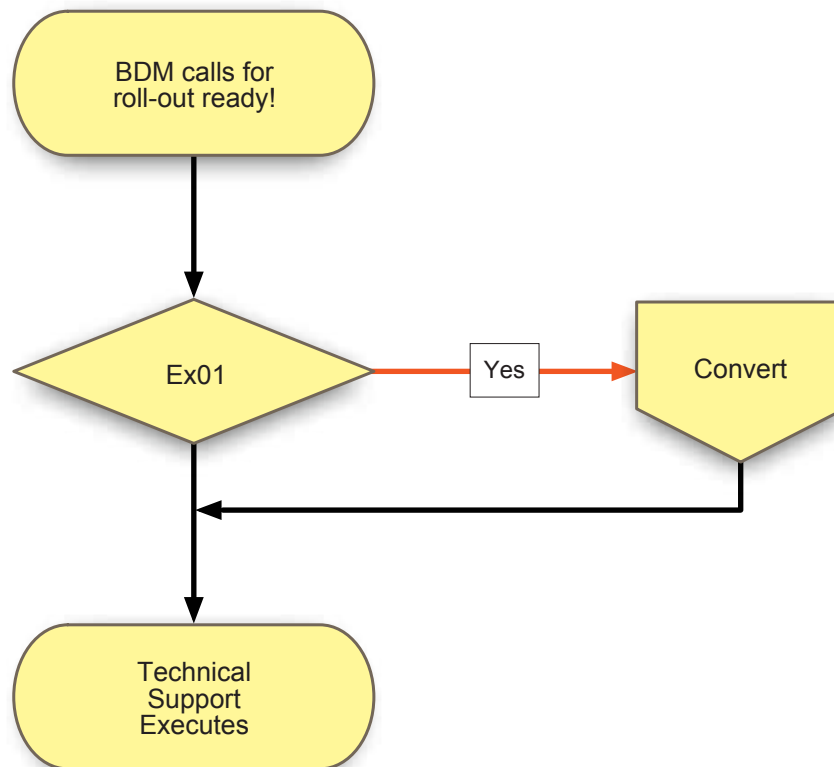
Ex01

- All screens and reports OK?

P02

- Checks and audit work of build team and passes it back to step 3.

## Step 5 : Roll-Out



Ex01

- Any new data since the DB Conversion (Step 1)?

Convert

- Convert the data (as in Step 1) and immediately return here.